

FACULTY

- **Arnedo, Vanessa.** Michael J Fox Foundation, New York
- **Barone, Paolo.** University of Salerno
- **Cedarbaum, Jesse.** Biogen, Weston
- **Compta, Yaroslau.** Hospital Clínic, Barcelona
- **Di Monte, Donato A.** German Center for Neurodegenerative Diseases, Bonn
- **Gelpí, Ellen.** Neurological Tissue Bank-IDIBAPS, Barcelona
- **Halliday, Glenda.** Sydney Brain Bank, University of New South Wales, Sydney
- **Hardy, John.** University College London-Institute of Neurology
- **Holton, Janice.** Queen Square Brain Bank, London
- **Iranzo, Àlex.** Hospital Clínic-IDIBAPS, Barcelona
- **Martí, M^a José.** Hospital Clínic, Barcelona
- **Meissner, Wassilios.** University of Bordeaux
- **Melki, Ronald.** Paris-Saclay Institute of Neuroscience
- **Mollenhauer, Brit.** Paracelsus Elena Klinik, Kassel
- **Pavese, Nicola.** Imperial College London
- **Poewe, Werner.** Medical University Innsbruck
- **Schrag, Anette-Eleonore.** University College London-Institute of Neurology
- **Seppi, Klaus.** Medical University Innsbruck
- **Spillantini, Maria Grazia.** University of Cambridge
- **Standaert, David G.** University of Alabama
- **Stefanis, Leonidas.** Biomedical Research Foundation Academy of Athens
- **Tolosa, Eduard.** University of Barcelona
- **Valdeoriola, Francesc.** Hospital Clínic, Barcelona
- **Vila, Miquel.** Vall d'Hebron Research Institute-ICREA, Barcelona
- **Wade-Martins, Richard.** University of Oxford

With the collaboration of

Bial

ucb Inspired by patients.
Driven by science.

abbvie

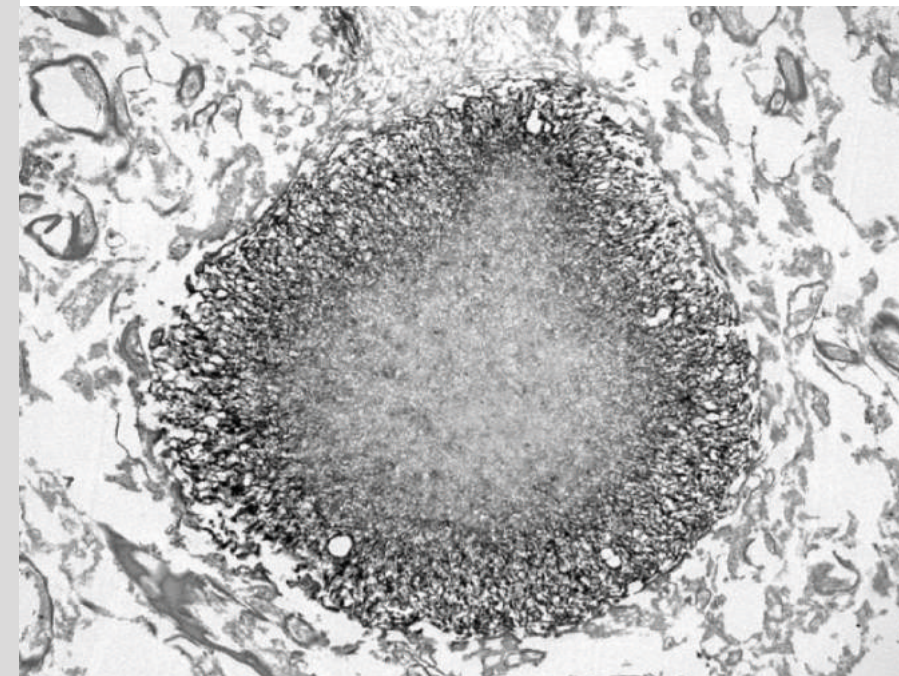
The Organizing Committee acknowledges the supporters of the Barcelona Parkinson Conference through unrestricted educational grants.



TO REGISTER
www.scn.cat

Technical Secretariat
SuportServeis
Calvet 30 – 08021 Barcelona
T. (+34) 93 201 75 71
secretaria@suportserveis.com

Barcelona Parkinson Conference



**Alpha-synuclein & Parkinson's disease:
Lessons from the past 20 years**

May 11-12, 2017

Aula Magna, Facultat de Medicina
Campus Clínic. Universitat de Barcelona

CLÍNIC
BARCELONA
Hospital Universitari

Vall d'Hebron
Institut de Recerca
VHIR

IDIBAPS
Institut
D'Investigacions
Biomèdiques
August Pi i Sunyer

PRESENTATION

Synucleinopathies are disorders characterized by the accumulation and spreading of the protein α -synuclein in the nervous system. These disorders include a broad spectrum of diseases characterized by parkinsonism, dementia and dysautonomia such Parkinson's disease or multiple system atrophy.

In the framework of the 20-year anniversary of the discovery of the link between the α -synuclein gene and familial Parkinson's disease, and of the presence of α -synuclein aggregates as the neuropathological hallmark of the disease, the planned Conference in Barcelona aims to provide an update on essential aspects of the various synucleinopathies including genetics and neuropathology, with strong emphasis on the latest basic science developments on normal and pathological α -synuclein. The role of α -synuclein as a biomarker and as a target for ongoing and novel therapeutic strategies will be reviewed.

The event constitutes a unique opportunity for the interaction among experts from different fields related to α -synuclein and its pathology.

Dr. Eduard Tolosa
Dr. Miquel Vila
Dr. M^a José Martí
Dr. Alicia Garrido (Conference Secretary)

Organising Committee

With the scientific endorsement of:


International Parkinson and
Movement Disorder Society


Societat Catalana
de Neurologia


sociedad española de neurociencia


Societat Catalana de
BIOLOGIA


MINISTERIO
DE ECONOMÍA, INDUSTRIA
Y COMPETITIVIDAD


Instituto
de Salud
Carlos III


CiberNed
Centro Investigación Biomédica en Red
Enfermedades Neurodegenerativas


SOCIEDAD ESPAÑOLA
DE NEUROLOGÍA

PROGRAM

Thursday May 11, a. m.

Synucleinopathies: clinical and neuropathological aspects	
Chairs: M. José Martí and Ellen Gelpí	
08:50 – 09:00h	Welcome
09:00 – 09:30h	Lewy body-type synucleinopathies: clinical spectrum W. Poewe, Innsbruck
09:30 – 10:00h	Lewy body-type synucleinopathies: neuropathological update J. Holton, London
10:00 – 10:30h	Multiple system atrophy: a non-Lewy body synucleinopathy W. Meissner, Bordeaux
10:30 – 10:45h	Discussion
10:45 – 11:15h	Coffee break/posters
11:15 – 11:45h	α-Synuclein propagation and multiple system atrophy G. Halliday, Sydney
11:45 – 12:15h	Prediagnostic stages of synucleinopathies A. Iranzo, Barcelona
12:15 – 12:30h	Discussion
12:30 – 13:00h	Historical perspective. The Contursi family: 20 years later P. Barone, Salerno
13:00 – 14:00h	Lunch/posters

Thursday May 11, p. m.

Alpha-synuclein physiology and pathogenesis	
Chairs: Miquel Vila and Leonidas Stefanis	
14:00 – 14:30h	Physiological and pathological role of α-synuclein at the synapse M.G. Spillantini, Cambridge
14:30 – 15:00h	In vitro and in vivo modeling of synucleinopathies R. Wade-Martins, Oxford
15:00 – 15:30h	Structural & functional characterization of α-synuclein strains R. Melki, Paris
15:30 – 16:00h	Discussion
16:00 – 16:30h	Coffee break/posters
16:30 – 17:00h	Pathogenic spreading of α-synuclein pathology D.A. Di Monte, Bonn
17:00 – 17:30h	Autophagy and α-synuclein in synucleinopathies L. Stefanis, Athens
17:30 – 18:00h	Innate and adaptive immunity in synucleinopathies D.G. Standaert, Alabama
18:00 – 18:30h	Discussion
20:00h	Dinner

Friday May 12, a. m.

Diagnostic markers in early and prediagnostic synucleinopathies	
Chairs: Francesc Valldeoriola and Yaroslau Compta	
09:00 – 09:30h	α-Synuclein and other wet biomarkers B. Mollenhauer, Kassel
09:30 – 10:00h	Structural imaging markers of synucleinopathies K. Seppi, Innsbruck
10:00 – 10:30h	Functional imaging markers of synucleinopathies N. Pavese, London
10:30 – 11:00h	Discussion
11:00 – 11:30h	Coffee break/posters
11:30 – 12:00h	Michael J Fox Foundation Systemic Synuclein Sampling Study V. Arnedo, The Michael J. Fox Foundation, New York
12:00 – 12:30h	Special lecture: Genetics of synucleinopathies J. Hardy, London
Therapeutic aspects of synucleinopathies	
Chairs: Eduardo Tolosa and Werner Poewe	
12:30 – 14:00h	Discussion with panelists
<ul style="list-style-type: none">- Therapeutic targeting of α-synuclein W. Meissner, Bordeaux- Clinical trials in prediagnostic PD: current challenges A.E. Schrag, London- Implementation of early disease-modification therapies: an industry perspective J. Cedarbaum, Biogen, Weston	

Friday May 12, p. m.

14:00h	Farewell
15:00 – 17:00h	POSTMEETING WORKSHOP Synucleinopathy challenges. An interactive neuropathology workshop Ellen Gelpí, Neurological Tissue Bank, Barcelona

Venue

Aula Magna, Facultat de Medicina i Ciències de la Salut - Campus Clínic. Universitat de Barcelona. (Casanova, 143 - 08036 Barcelona)

